

# CHAPTER 1

## Welcome to CAM-IP/II 4/9/16 port Digital

### Surveillance software

#### 1.1 Introduction Digital Surveillance software w/ (Digital MPEG 4 Recording)

The CAM-IP/II 4/9/16 port is an ideal solution for Internet LAN Camera, it allows you to connect with 4/9/16 Internet cameras at the same time. With this Digital Surveillance software, The system uses motion detection technology and Divx MPEG4 Codec, only the moving objects will be recorded in mpeg4 format.

#### 1.2 Product Features

- **Support 802.11b ,RJ45 and Full-Speed USB Interface**
- Supports real-time DIVX 5.02(AVI) compression
- Records video image in **Divx mpeg4 format.**
- Storage Recyclable: When running out of the allocated disk space, files with the earliest date will be overwritten automatically
- **Motion Detection:** Detects any movement in the mask area and invokes the alarm as soon as movement is detected.
- MPEG4 Video file database management system, supports delete, backup, or review functions

System Performance (Local Ethernet 100 Base-T)				
	1 cameras	4Cameras	9Cameras	16 Cameras
Frame Rate(MAX)	15 – 30 fps	15-20 fps	10-15 fps	5~10 fps
HD Space requirement	2~3GB /24hour	7~8GB /24hour	18~27GB /24hour	32~48GB /24hour

#### 1.3 System requirements

- 1.Windows 2000 / XP
- 2.Pentium 4: 1.3 GHz processor or equivalent
- 3.128 MB of RAM
- 4.20 GB HD space
- 5.Full-Speed USB 1.1 or 2.0Host

# CHAPTER 2

## Software Installation and Operation Guide

### 2.1 Software Installation Step by Step



1. Please insert the driver & software CD into the CD-ROM drive and then you will see the installation window. Follow the on-screen instructions to install the driver & software.
2. Click on "Install Microsoft DirectX 9" to start the installation. Then

follow the on-screen instructions. Make sure that DirectX 9 or a later release must be installed before installing the USB 1.1 driver.

3. Click on "Install Divx MPEG4 CODEC 5.02" to start the installation of MPEG4 video encoder and decoder (Our product merely compatible with Divx 5.02).
4. Click on "Install Grand USB driver".
5. Click on "Install Grand WGuard" to startup the installation of software, then follow the on-screen instructions.
6. After installing the device and the programs, the following are installed on your computer and can be verified.

Start-Programs- WalkGuard –Cam-Center-WalkGuard.exe

Start-Programs- WalkGuard –Cam-Center -FileDB.exe

Start-Programs-Divx-.....

7. Plug the USB 1.1 into your PC. or RJ45 cable into your Router.

## CHAPTER 3

### CAM-IP/II 4/9/16 port Operation Guide

#### 3.1 Main Window



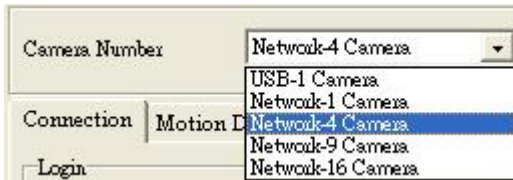
#### 3.2 How to start this software



1.You must first install the application from the CD, then you can run the program " Start-Programs- WalkGuard –Cam-Center-WalkGuard.exe"



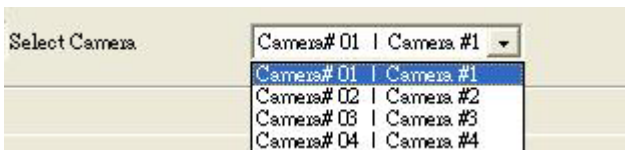
2. Select the Software Language that you want to display



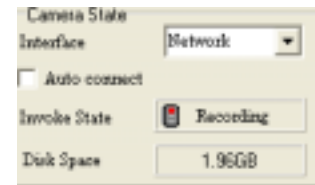
3. This software supports those following modes:

- a. USB-1 Camera (Only for USB PC Camera used)
- b. Network-1 Camera (Only for one Internet Camera or one Wi-Fi Camera)
- c. Network-4 Camera (Connect with 4 cameras at the same time)
- d. Network-9 Camera (Connect with 9 cameras at the same time)
- e. Network-16 Camera (Connect with 16 cameras at the same time)


4. You need to select the camera to setup the detail such as IP address, ID or Password



### 3.3 Camera State Preview & Icon function



Click this button to connect with 4 cameras and start to record video

- **Interface:** you can select the interface between USB or Network (Internet)
- **Auto Connect:** Connect to Camera automatically
- **Invoke State:** When this icon displays red color , the monitor is recording.
- **Disk Space:** It shows the free space of the hard disk that you can use for recording.
- **Connect:** Connect to the IP Camera that have been selected by yourself
- **Disconnect:** Press this icon to Disconnect.
- **FileDB (Record Files Database):** Press this icon to load the database program.
- **Pop Window and Full Screen:** When clicking this icon there will be a 4/9/16 cameras window on the Desktop.
- **SnapShot:** Snap a Still BMP Image



If you want to use more than 4 cameras, please select the Item "Camera Number"

### 3.4 Login and Connection

Login

URL

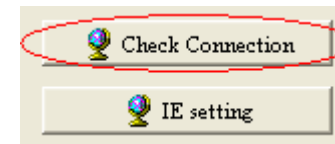
Port

UserID

Password

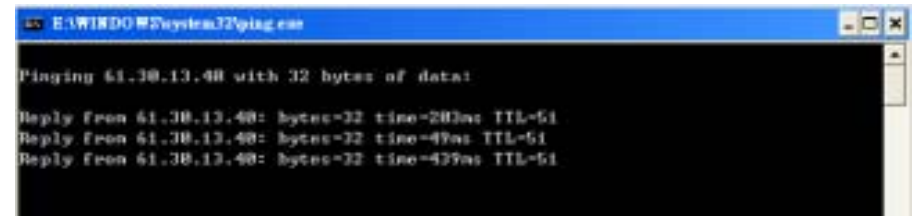
- Please Select the Interface as "Network"
- Input the IP Address Port number
- Input the User ID and Password
- Click Connect bottom to connect to IP Camera

### 3.5 Check Connection

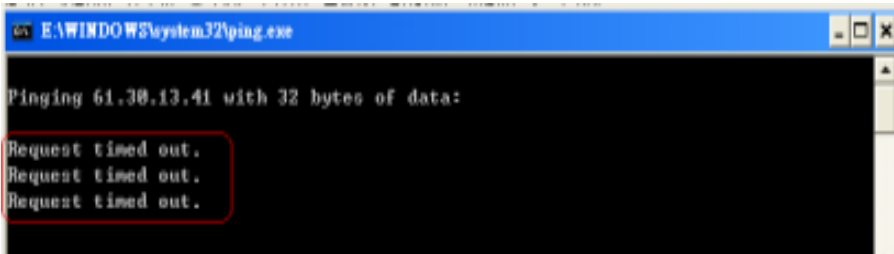


- To Check the network status about the connection between Computer and IP Camera

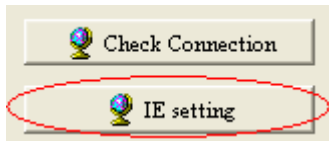
If you can see the following response, which mean that the connection is successful



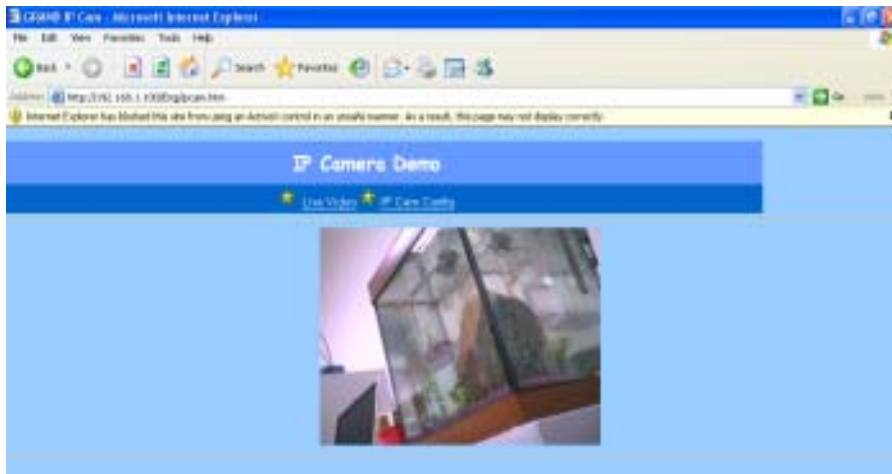
If the request timed out, please check the IP address and refer to the Manual about IP Camera



### 3.6 IE Setting

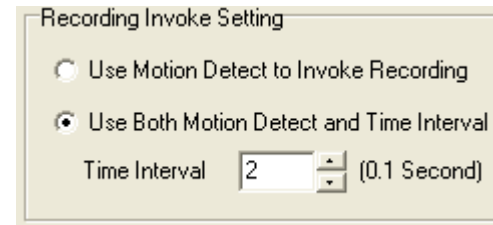


- Open the Internet Explorer to set the IP camera



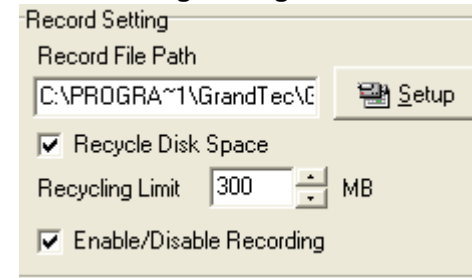
Please refer to the Manual IP Camera

### 3.7 Recording Invoke Setting



- **Invoke Setting:** There are two Recording methods. You can select method 1, which only recording when motion is detected.
- If you want to record with interval time, you should input an interval value.

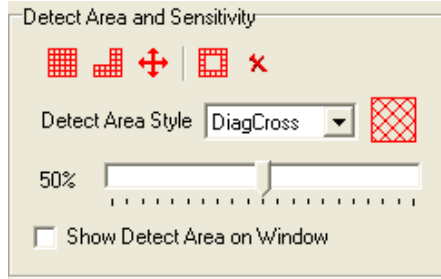
### 3.8 Recording Setting



- **Record File Path :** Press the "Setup" icon to choose the file database location
- **Recycle Disk Space:** When running out of Recycling Limit space, those files in the database with the earliest date will be deleted automatically
- **Enable and Disable Recording:** starts/stops recording



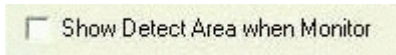
### 3.9 Motion Detect Area and Sensitivity



- **Change Mask Style and Color :** You can change the area style and color



- **Change Sensitivity :** Drag the Slide Bar to change the motion detect sensitivity.



- **Show Detect Area on Monitor :** Check this checkbox to show or hide detect area on monitor.



- **Add Detect Area :** Add detect area on monitor window.



- **Remove Detect Area :** Remove detect area on monitor window.



- **Select All :** Select all of the window client area on monitor window.



- **Inverse Detect :** Invert detect area.

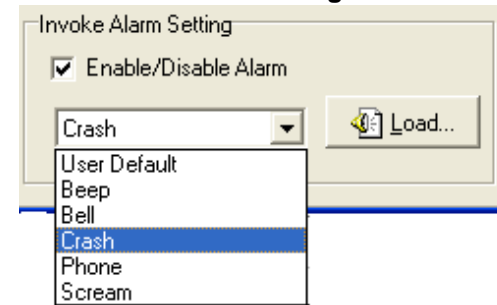


- **Clear All :** Clear all detect area.

- **Detect Area Style :** Change the style of motion detect mask as follows.

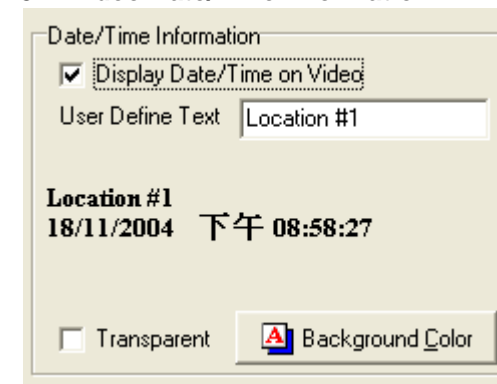


### 3.10 Invoke Alarm Setting



- **Invoke Alarm:** If you enable the Alarm, the system will set off the alarm when the camera is invoked.
- **Invoke Actions Choice :** You can press the “Load” icon to change the alarm audio wav file, or select one of the sounds from the list

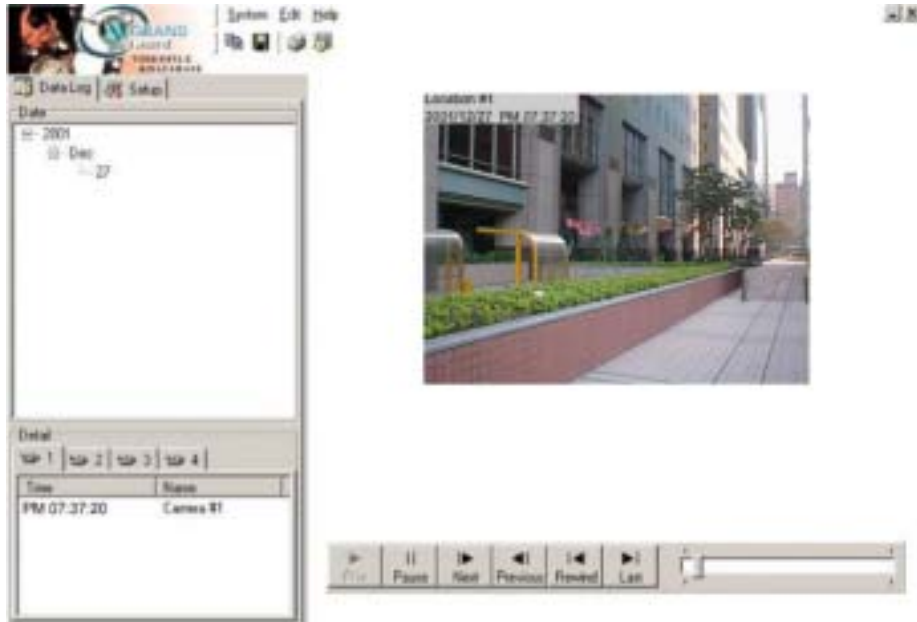
### 3.11 Video Date/Time Information



- **Date/Time Information :** Display the video information, including Text , Text Front, Text Color, Date and Time on the video window

## CHAPTER 4

### File-DB Operation Guide

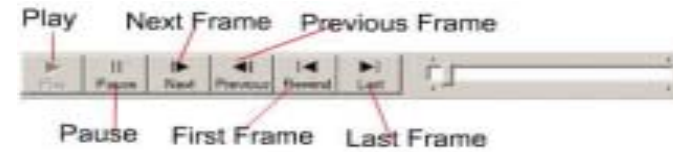


This application software is a powerful database manager. All the recorded files will be stored in this database. You can watch the recorded video data with this playback operation panel. The invoke action (motion detection or time interval) will create a new log and record on the tree manager.

#### 4.1 Playback Video

Select the Camera number and its video date/time item then press the play button.

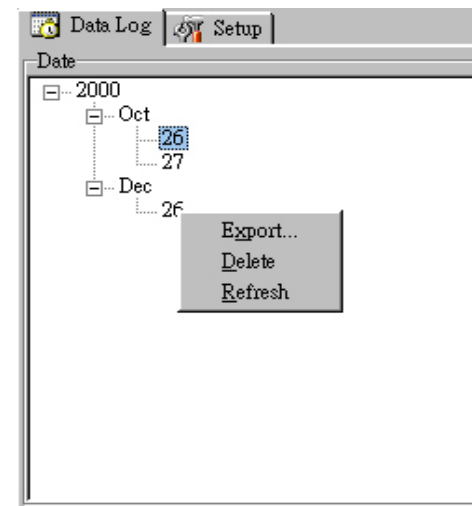
#### 4.2 Playback Operation Panel Button



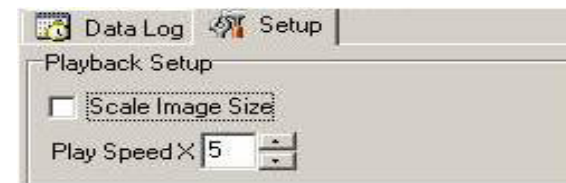
#### 4.3 Delete or Export record video data

Select the camera number and its video date/time item then press the mouse right button. A small dialog box will pop up.

1. Choose the "Export" item to move this video data to another location.
2. Choose the "Delete" item to delete this video data forever.
3. Choose the "Refresh" item to refresh the Data Log.



Playback Setup



The "Scale Image Size" is a digital zoom function that scales the frame.